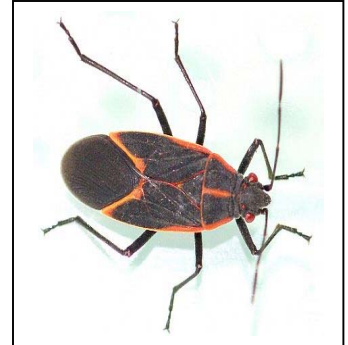


## Box Elder Bug

**Size:** Adults are about 1/2" to 5/8" long.

**Description:**

- Colour is black with red markings.
- Elongated oval shape, looking flattened with narrow head.
- Sucking-piercing mouth part folded in under head.
- Antenna 4 segmented and about 1/2 of body length.
- Winged pattern overlaps on back.



**Biology and Habits:** The Box Elder Bug enters buildings in the last warm days of fall months to overwinter. In the spring the adults emerge and fly to egg laying sites in host plants and trees, and then starts the cycle all over again. Some homes experience enormous numbers around their home in the fall.

Inside homes they are mainly a nuisance and the only structural damage they cause is fabric staining from their red fecal matter. If crushed they emit a strong disagreeable odor. occasionally when picked up the bug will use it's sucking mouth part and pierce your finger, resulting in a painful red skin irritation.

**Control:** The only beneficial solution to ensure this pest doesn't escalate out of hand around your property is to complete exterior perimeter treatments to reduce the population before the fall advancement indoors.

We recommend one treatment in Late August – early September. Then a Second exterior Treatment in late September – early October depending on warm fall temperatures.