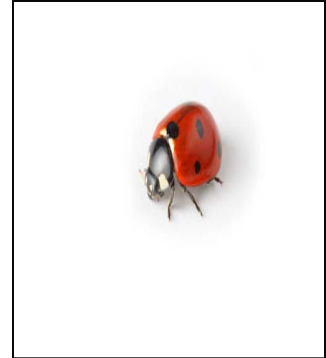


Multi Coloured Asian Beetle

Size: Adults are about 1/4" to 3/8" long.

Description:

- Colour vary from red, orange, yellow and brown.
- Multiple spots with varying colours and patterns.
- Head partially concealed.
- Antenna very short 8-11 segments with weak clubbed end.



Biology and Habits: These beetles were introduced by organic growers to assist in combating aphids on fruit trees etc. Unfortunately the beetles began to overwinter inside structures and their populations have exploded. The adults overwinter and then emerge in the Spring to lay their eggs on aphid infested plants. The larvae and adults feed on aphids, mealy bugs, mites and scale insects etc., making them beneficial predators.

Due to the overwintering inside buildings this beneficial predator's population has been artificially increased significantly. Resulting in more and more homeowners having to deal with this fall unwanted guest.

Control: Control measures are the same as described in the Box Elder Bug fact sheet. Completing these two exterior perimeter treatments ensures the main majority of the adult beetles around your home are eliminated in early fall before they gain entry inside.